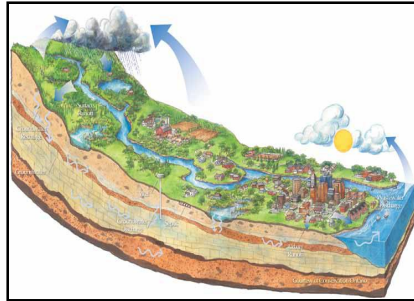


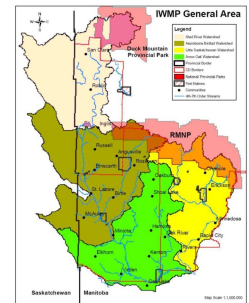


# Assiniboine - Birdtail Integrated Watershed Management Plan



A watershed is defined as an area of land where all precipitation that falls will drain downhill to a common point such as a river or lake. This connectivity extends beyond the soil and water to include the plants and animals that depend upon these systems for life.

Since a watershed is defined by the influence of water, topography and soils it's a natural boundary; as opposed to municipal or provincial boundaries which are artificial, man-made lines on a map. Given that water crosses so many human boundaries, managing or planning for a watershed requires that landowners, municipalities, towns, businesses, and all other stakeholders work together on a watershed basis.



The Assiniboine – Bird tail watershed covers approximately 1.7 million acres and extends from the Riding Mountain National Park in the North to nearly the Trans-Canada Highway in the south. The northern portion of the watershed is characterized by the Boreal Forest ecosystem transitioning to the Aspen Parkland ecosystem in the South.

## What is an Integrated Watershed Management Plan (IWMP)?

- A roadmap to assist the watershed community in reaching its goals and objectives in regards to watershed health.
- Purpose of this plan - to clearly state the goals for the protection, conservation, restoration of land and water, aquatic ecosystems and drinking water sources in the watershed.
- Intended to outline the specific actions that each organization and stakeholder have committed to implement in order to achieve these goals.
- Key Participants in the planning process:
  - Watershed residents,
  - Water Planning Authority which includes the Lake of the Prairies and Upper Assiniboine River Conservation Districts,
  - Watershed Planning Advisory Team
  - Project Management Team



**To identify surface water management issues and implements sustainable water management strategies**

Objectives:



- A) Identify surface water management issue by gathering local knowledge from watershed stakeholders
- B) Implement sustainable water management strategies that minimize negative impacts to the watershed and its stakeholders



***To have surface water of a quality which does not limit human activity or impair ecological function***

Objectives:

- A) Limit nutrient loading in the watershed
- B) Limit sediment loading in the watershed
- C) Increase awareness of all potential sources of pollution in the watershed



***To achieve a balance between human and ecological interests by conserving and restoring natural features on the landscape***

Objectives:

- A) Protect existing wetlands, riparian areas and other aquatic habitats while seeking areas for restoration efforts
- B) Protect existing native grasslands and provide information on sustainable management practices
- C) Protect existing forest cover while seeking areas for restoration efforts



***To provide tools and knowledge to empower residents to safeguard all of our drinking water sources***

Objectives:

- A) Identify and mitigate potential threats to public drinking water sources
- B) Identify and mitigate potential threats to semi-public drinking water sources
- C) Help owners of private wells ensure the safety of their drinking water sources



***To increase knowledge and address data gaps to improve ground water quality and quantity***

Objectives:

- A) Identify recharge and withdrawal areas and rates



For more information or to read the full report, please contact

- Lake of the Prairies Conservation District at 564-2388 or [lpcd@mts.net](mailto:lpcd@mts.net)
- Upper Assiniboine River Conservation District at 567-3554 or [uarcd@mts.net](mailto:uarcd@mts.net)